

Hot Runner System

热流道成型装置

混合树脂部分

MIXING TIP Series



PLAM TIP 不仅仅使用于塑胶的成型，还可以使用于液状硅，橡胶热硬化树脂等，以及混合塑胶成型。

Ideal not only for mixing of injection molding plastics, but also for liquid silicon rubber (LSR), rubber molding, and heat cured resins.



特长 Features

有效防止成型品的色斑

Prevents color blemishes in molded products

应用流体工学来设计流线形状的流路，通过不断的分散与合流，可以使塑胶的混合性和分散性得到提高 Drawing on fluid engineering for the design of flow paths, screw spiral forms with repeating dispersion and confluence excellent mixing and dispersion properties for master batches and fillers

有效防止溢料的产生

Prevents resin dripping

通过PLAM TIP 可以抑制成型机气缸的内压，从而抑制溢料的效果 Prevents resin dripping The PLAM TIP checks buildup of pressure in the molding machine cylinder to reduce resin dripping.

混合的时候不需要背压

No back pressure required for mixing

混合的时候不需要背压，因此聚合分子的变质，切断性的破坏之类的事不会发生 High back pressure is not required for mixing so polymer molecules do not suffer degeneration or destructive cutting

有效防止异物混入

Prevents penetration of contaminants

在末端装有过滤器，可以有效的防止无磁性金属等异物（如铝，铜，黄铜，石子等）的混入，另外如果热流道安装在模具上时，如需要清理异物，无需从模具上将热流道拆卸下，就可以清理 The PLAM TIP filter prevents contaminants an non-magnetic metals (such as aluminum, copper, brass or stone) that have penetrated form mixing in with manufactured products. It also eliminates the need for disassembly of the hot runner for cleaning to remove contaminants from hot runner molds.

无滞留所得构造

Blockage-free structure

采用流线型流路，不会有树脂滞留，从而不会有烧焦现象 The streamlined flow path eliminates resin blockage to prevent burning

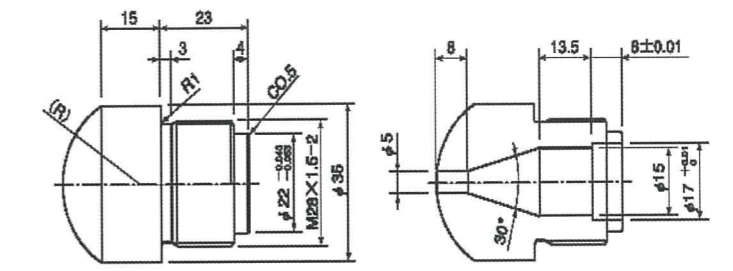
易检修

Easy maintenance

检修比较容易，不需要特殊的工具 No special tools are necessary, So that the maintenance is easy.

组装加工图 Assembly work diagram

可以根据客户的需要，喷嘴末端可以加工
Nozzle tip configurations are available to suit user specifications



本说明书未预告变更的产品，如需购买，请在购买前跟各营业部咨询。 Specification are subject to change without notice.